

**Joseph**  
*machine*

## PREMIER

Single-head cutting-off machine



Single-head cutting-off machine with front blade Ø 500/600 mm

## TECHNICAL INFO

### Structure

- Electro-welded steel basement
- 2 horizontal pneumatic clamps
- Pneumatic head tilting
- Mechanical stops for quick angle selection 45°/90°/135°



### Cutting unit's description

- Cutting angles display on graduated ruler
- Venturi lubrication system
- Widia blade



### Power supply

Electric power	400 V / 50 Hz
Motor power	2,2 kW (500 mm) - 4 kW (600 mm)
Air compressed supply	7 Bar
Air consumption per cycle	18 NI



### Cutting unit's data

Blade diameter	500/600 mm
Shaft diameter	30 mm
Blade revolutions	2.800 giri/rpm
Max. cutting speed	6 m/min
Blade output management	oleopneumatic
Cutting angles	20°-135°

### Safety

- Integral cutting area protections with manual opening and closing
- Complies with CE safety regulations as standard

### Cutting Capacity

		
90° (500 mm / 600 mm)	155x155 / 190x190 mm	180x150 – 250x100 / 230x180 – 300x120 mm
45° (500 mm / 600 mm)	140x140 / 170x170 mm	180x100 – 200x65 / 160x180 – 210x120 mm

### General specifications



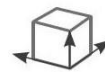
500 mm  
600 mm



2.2 kW  
4 kW



520 kg  
670 kg

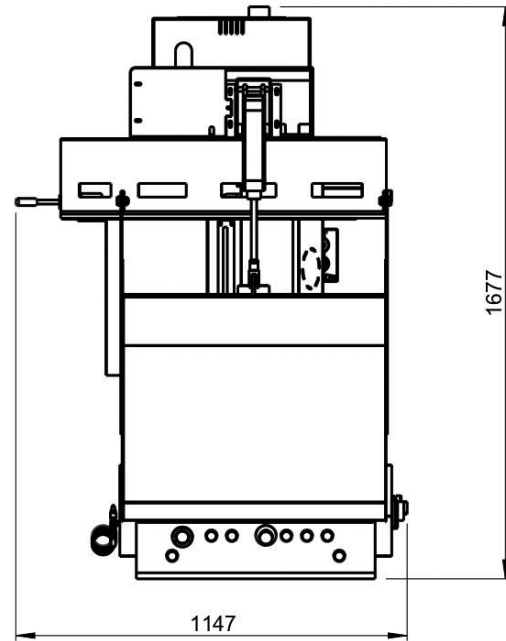
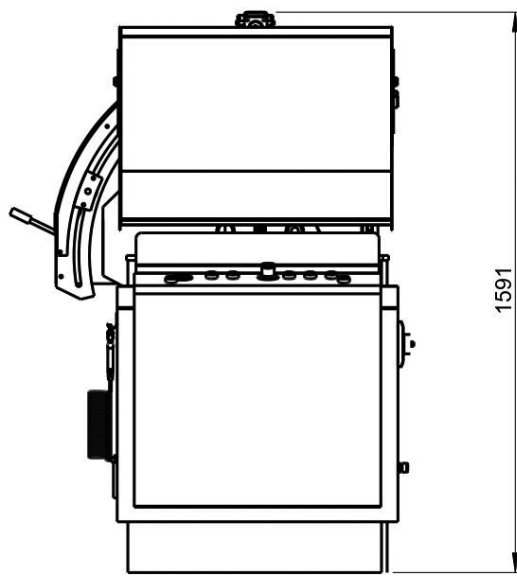


1.400x960x1.650 mm  
1.550x960x1.650 mm

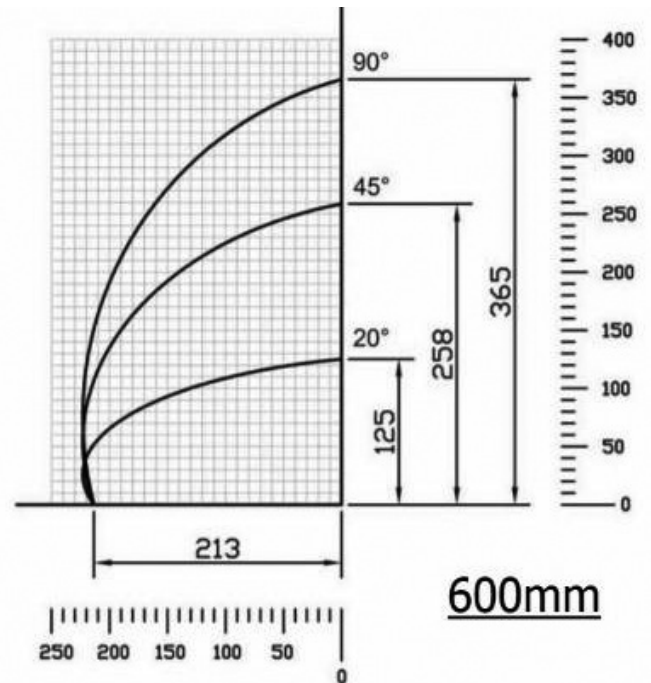
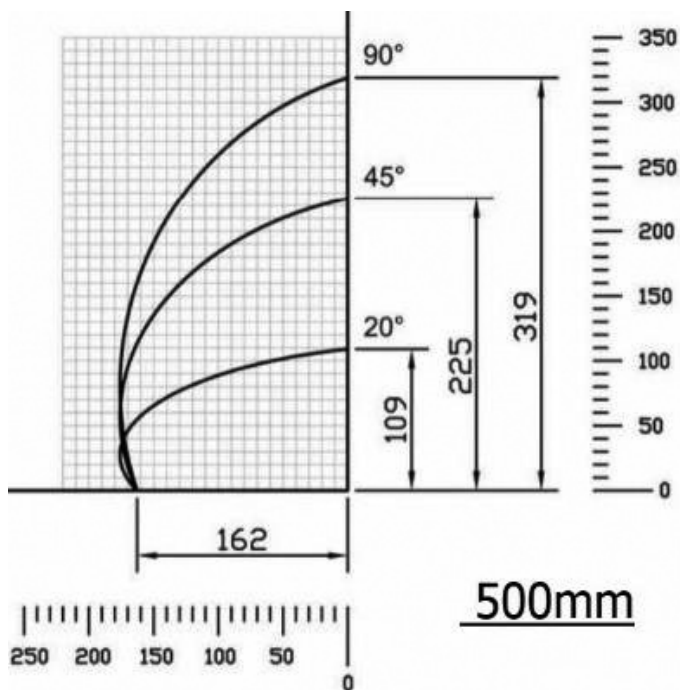
### Optionals

- Widia blade 500 mm (spare)
- Widia blade 600 mm (spare)
- 1 pneumatic vertical clamp
- USA-CANADA setup (UL-CSA standards)
- Autotransformer for special voltage
- Ocean freight packaging

## Machine layout



## Cutting diagrams



# *Joseph* *machine*

595 Range End Rd  
Dillsburg, PA 17019

Phone (717) 432-3442  
Fax (717) 432-0680  
[www.josephmachine.com](http://www.josephmachine.com)